

LA FAMILLE

CATALANE

C'est bien pour faire plaisir à Kti !

But du jeu :

Le gagnant est le joueur qui a posé devant lui le plus de familles complètes.
Une famille est complète quand tous les membres de la famille d'une même couleur sont réunis.

Déroulement du jeu:

Toutes les cartes sont distribuées aux joueurs.

Le joueur 1 demande au joueur 2 de son choix une carte qui lui manque pour compléter une famille.

Si le joueur 2 a la carte demandée par le joueur 1, il la donne au joueur 1 qui rejoue.
Si le joueur 2 n'a pas la carte demandée, le joueur 1 passe son tour, et c'est le joueur qui est à la gauche du joueur 1 qui joue.

Chaque joueur joue à tour de rôle, dans le sens des aiguilles d'une montre.

Selon l'âge des enfants, on peut simplifier le jeu en enlevant certaines cartes (personnages ou couleurs).

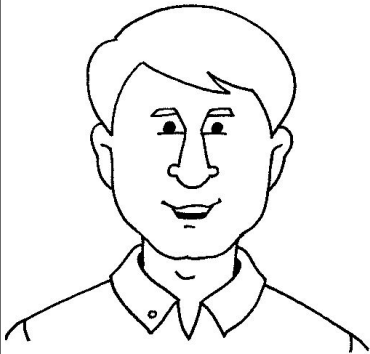
On peut aussi, pour aider les enfants, leur proposer un panneau récapitulatif des différentes couleurs et des différents personnages.

lamaternelledemoustache.net

Les images sont issues de « L'Imagerie »

© La classe Maternelle

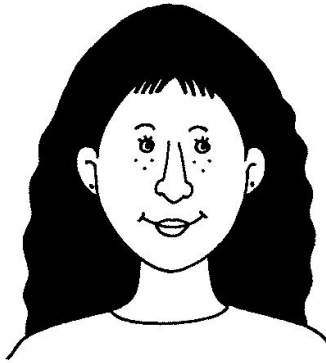
BLAU - 1



el pare

JT

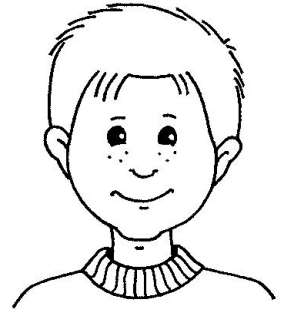
BLAU - 2



la mare

JT

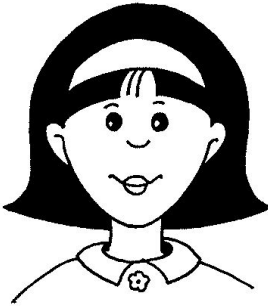
BLAU - 3



el fill

JT

BLAU - 4



la filla

JT

BLAU - 5



el padri

JT

BLAU - 6



la padrine

JT

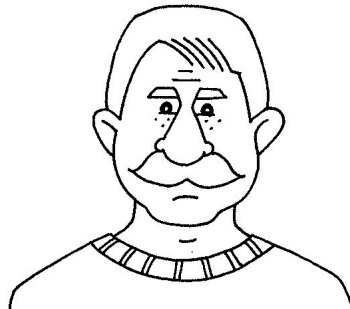
BLAU - 7



la tia

JT

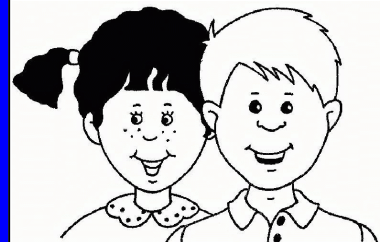
BLAU - 8



el oncle

JT

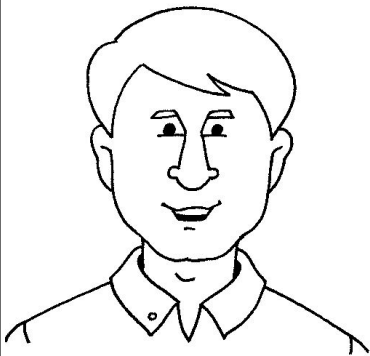
BLAU - 9



els costi

JT

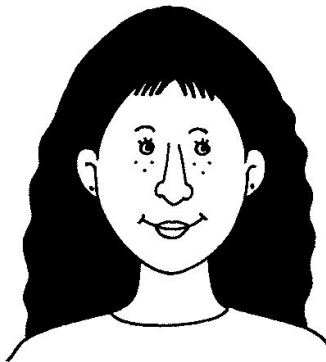
VERMELL - 1



el pare

JT

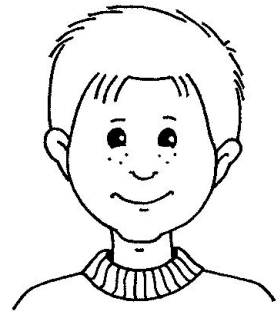
VERMELL - 2



la mare

JT

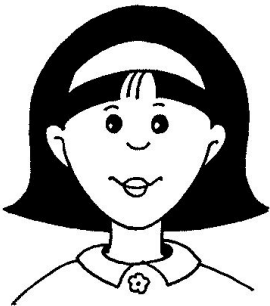
VERMELL - 3



el fill

JT

VERMELL - 4



la filla

JT

VERMELL - 5



el padri

JT

VERMELL - 6



la padrine

JT

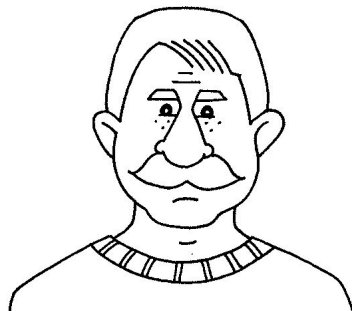
VERMELL - 7



la tia

JT

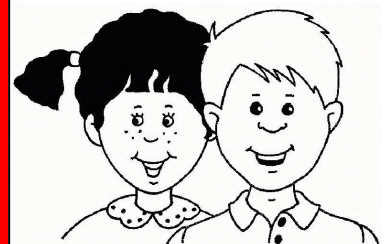
VERMELL - 8



el oncle

JT

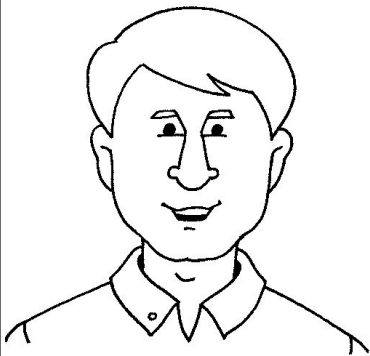
VERMELL - 9



els costi

JT

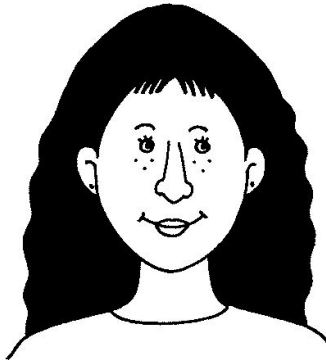
GROG - 1



el pare

JT

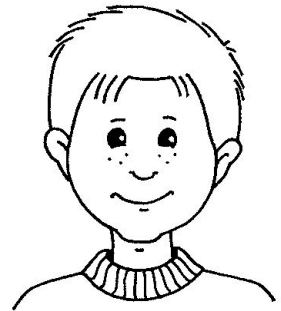
GROG - 2



la mare

JT

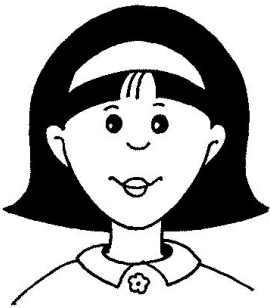
GROG - 3



el fill

JT

GROG - 4



la filla

JT

GROG - 5



el padri

JT

GROG - 6



la padrine

JT

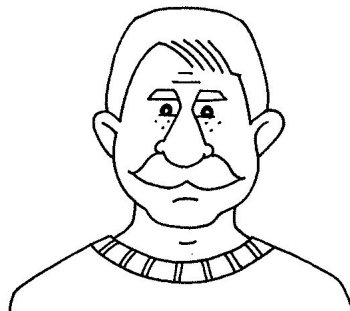
GROG - 7



la tia

JT

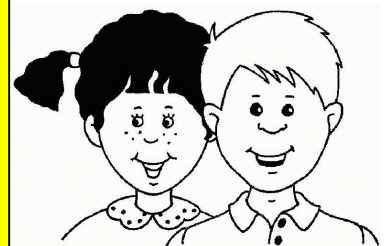
GROG - 8



el oncle

JT

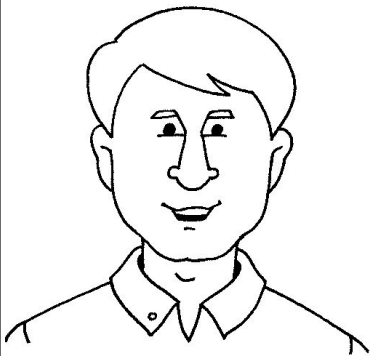
GROG - 9



els costi

JT

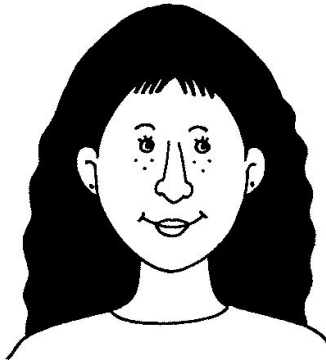
VERD - 1



el pare

JT

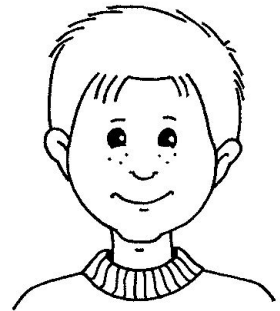
VERD - 2



la mare

JT

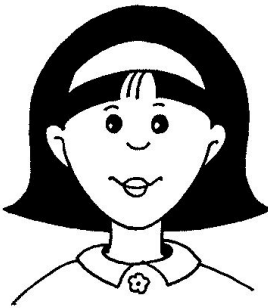
VERD - 3



el fill

JT

VERD - 4



la filla

JT

VERD - 5



el padri

JT

VERD - 6



la padrine

JT

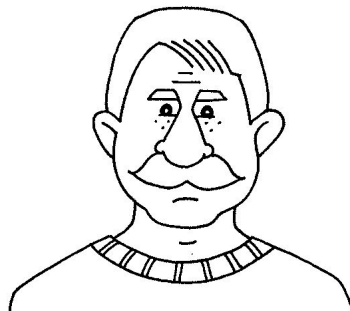
VERD - 7



la tia

JT

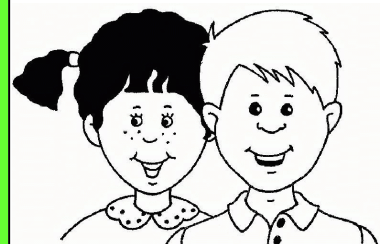
VERD - 8



el oncle

JT

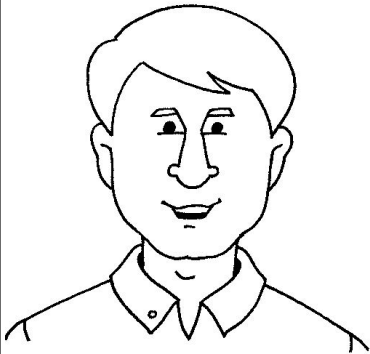
VERD - 9



els costi

JT

ROSE - 1



el pare

JT

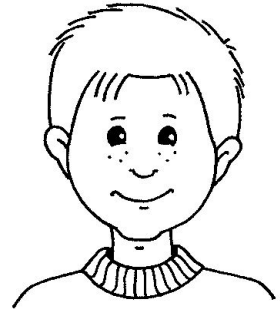
ROSE - 2



la mare

JT

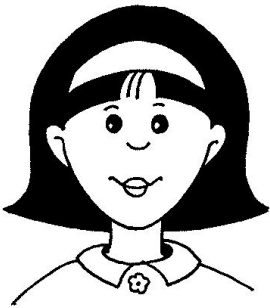
ROSE - 3



el fill

JT

ROSE - 4



la filla

JT

ROSE - 5



el padri

JT

ROSE - 6



la padrine

JT

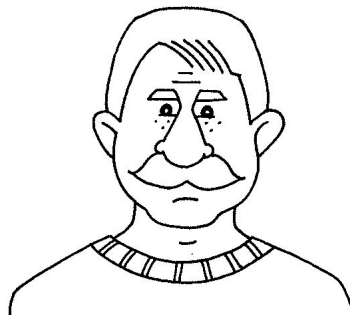
ROSE - 7



la tia

JT

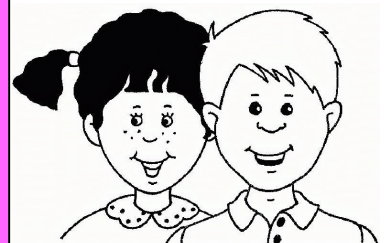
ROSE - 8



el oncle

JT

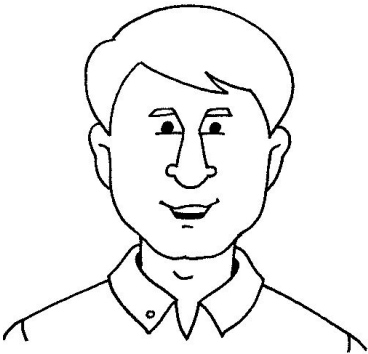
ROSE - 9



els cosi

JT

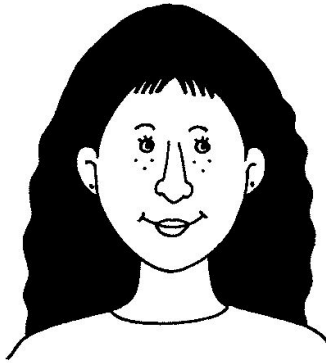
GRIS - 1



el pare

JT

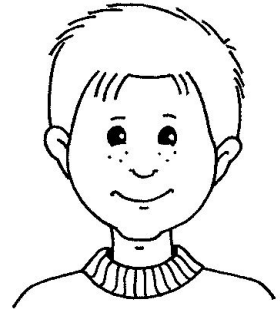
GRIS - 2



la mare

JT

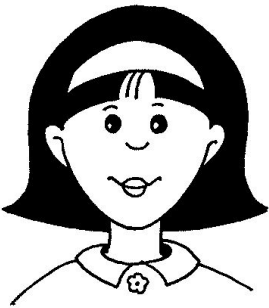
GRIS - 3



el fill

JT

GRIS - 4



la filla

JT

GRIS - 5



el padri

JT

GRIS - 6



la padrine

JT

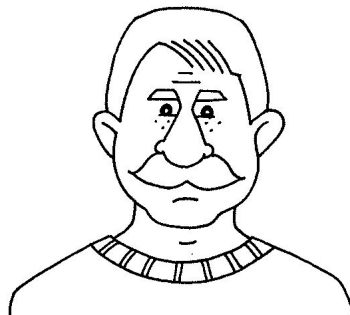
GRIS - 7



la tia

JT

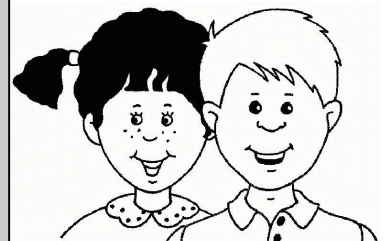
GRIS - 8



el oncle

JT

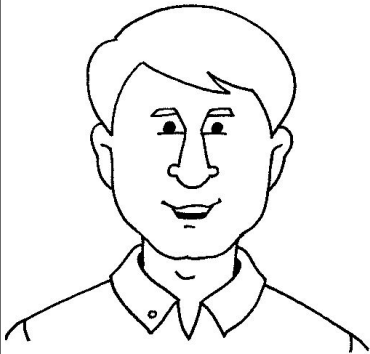
GRIS - 9



els cosi

JT

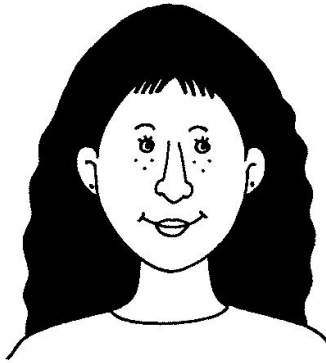
BLANC - 1



el pare

JT

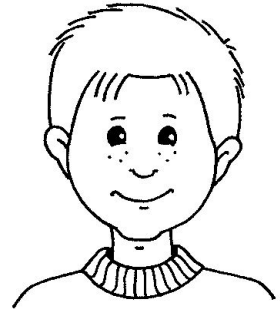
BLANC - 2



la mare

JT

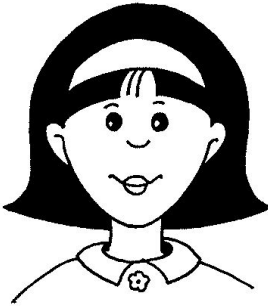
BLANC - 3



el fill

JT

BLANC - 4



la filla

JT

BLANC - 5



el padri

JT

BLANC - 6



la padrine

JT

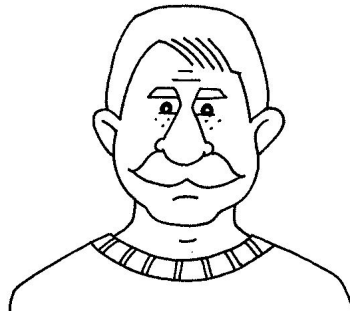
BLANC - 7



la tia

JT

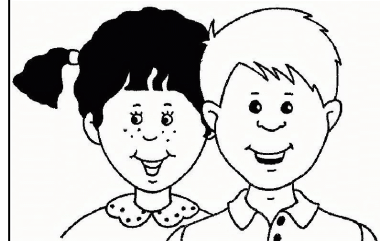
BLANC - 8



el oncle

JT

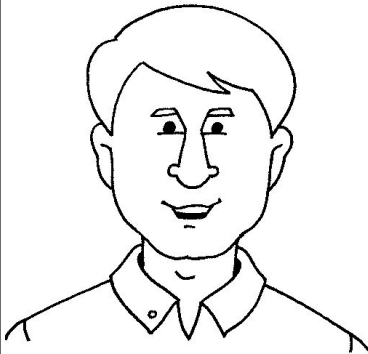
BLANC - 9



els cosi

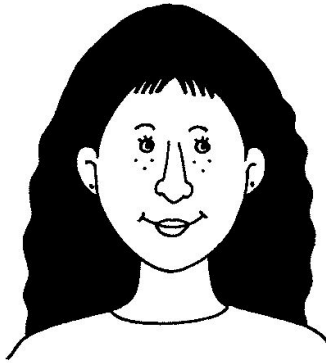
JT

NÈGRE - 1



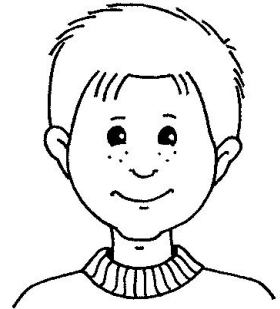
el pare

NÈGRE - 2



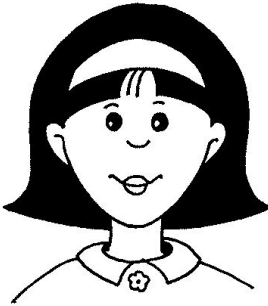
la mare

NÈGRE - 3



el fill

JT
NÈGRE - 4



la filla

JT
NÈGRE - 5



el padri

JT
NÈGRE - 6



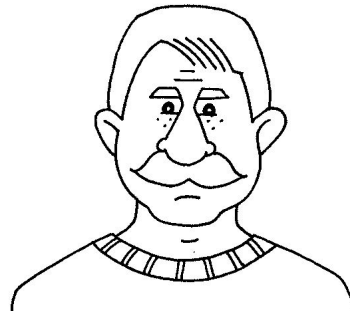
la padrine

JT
NÈGRE - 7



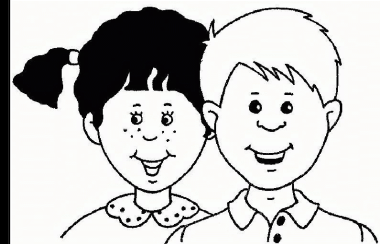
la tia

JT
NÈGRE - 8



el oncle

JT
NÈGRE - 9



els costi

JT

JT

JT